

How to Convert to Power Windows

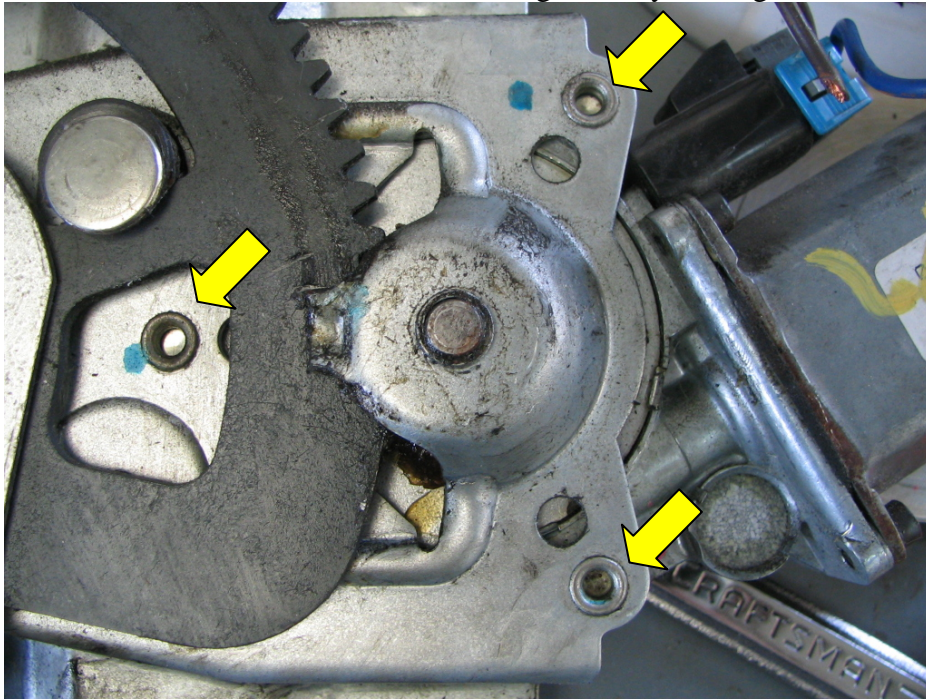
1961-1964 F100 Pickups

Parts you will need:

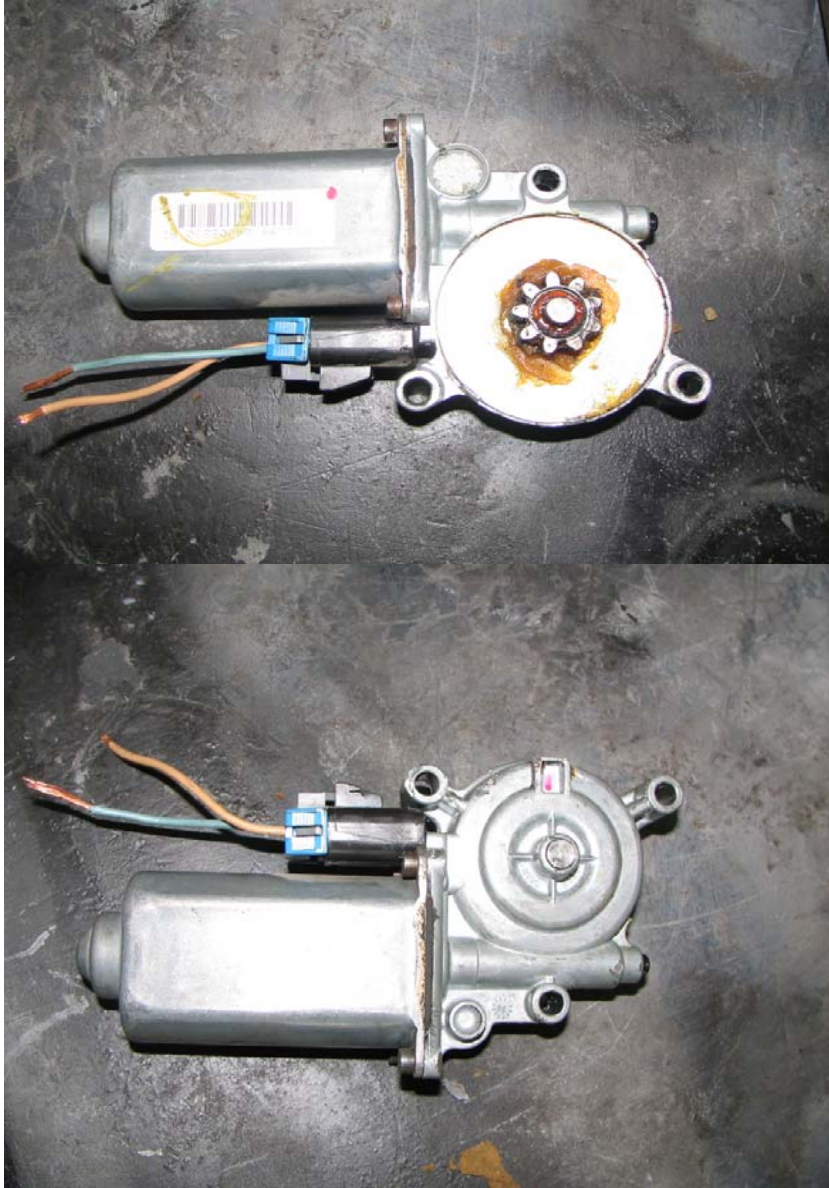
1. 1999 (or Older) Saturn Power Window Motor. You can use front or rear motors they are the same motor but the regulators are different, make sure you have a driver and passenger side regulator.
2. Drill bits 5/16 bit and 1/4 drill bits will work.
3. Window regulator from the pickup.
4. 1/4 20 bolts and nuts, washer and lock washers
5. You may want to grab some window switches while you at it.

These are the steps I took to convert my windows to power windows. My truck is a 1964 F100 Style Side

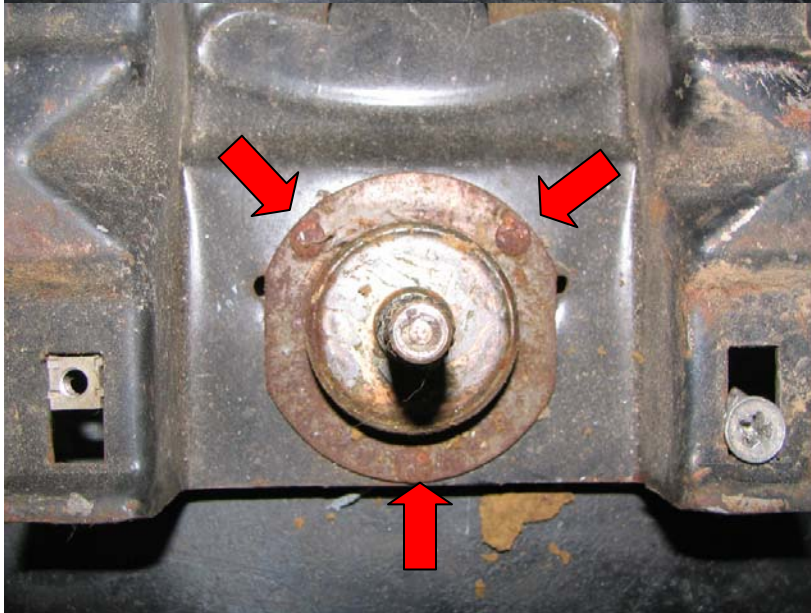
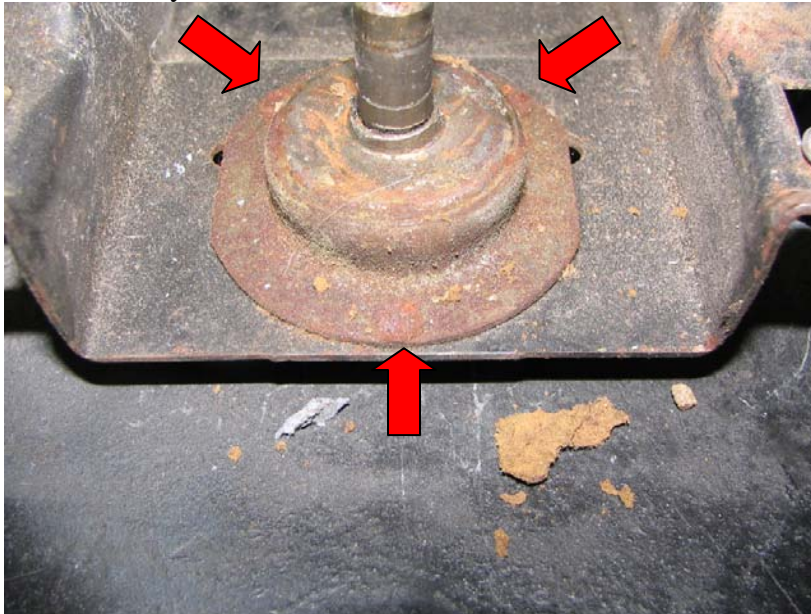
1. Remove the Motor from Saturn regulator by drilling out the 3 rivets that hold the motor.



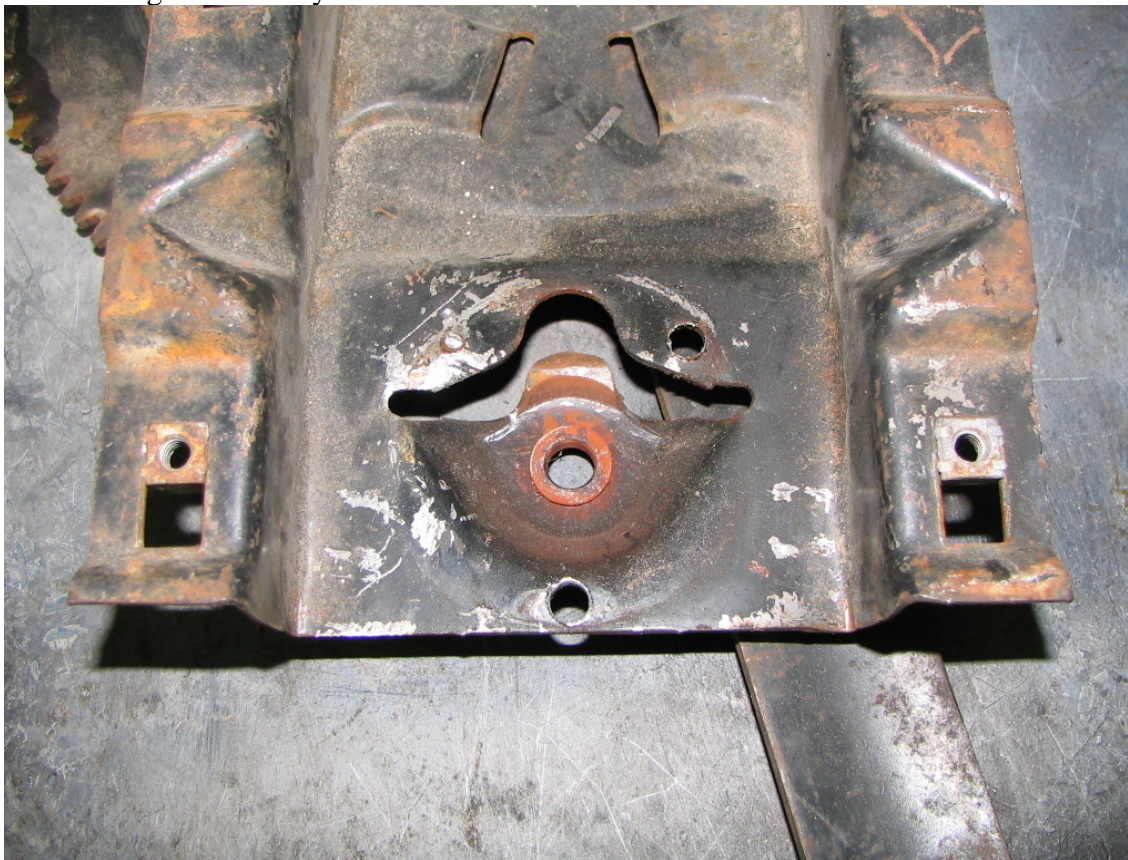
2. This is what your motor should look like after you removed the rivets



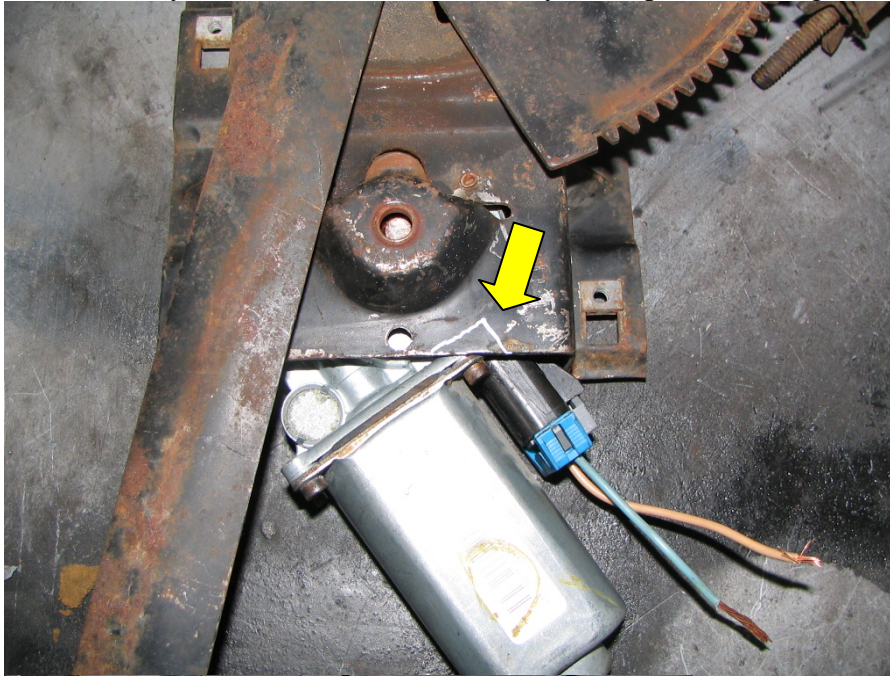
3. Next you will need to remove the hand crank front the truck regulator you do this by drilling out the 3 rivets.



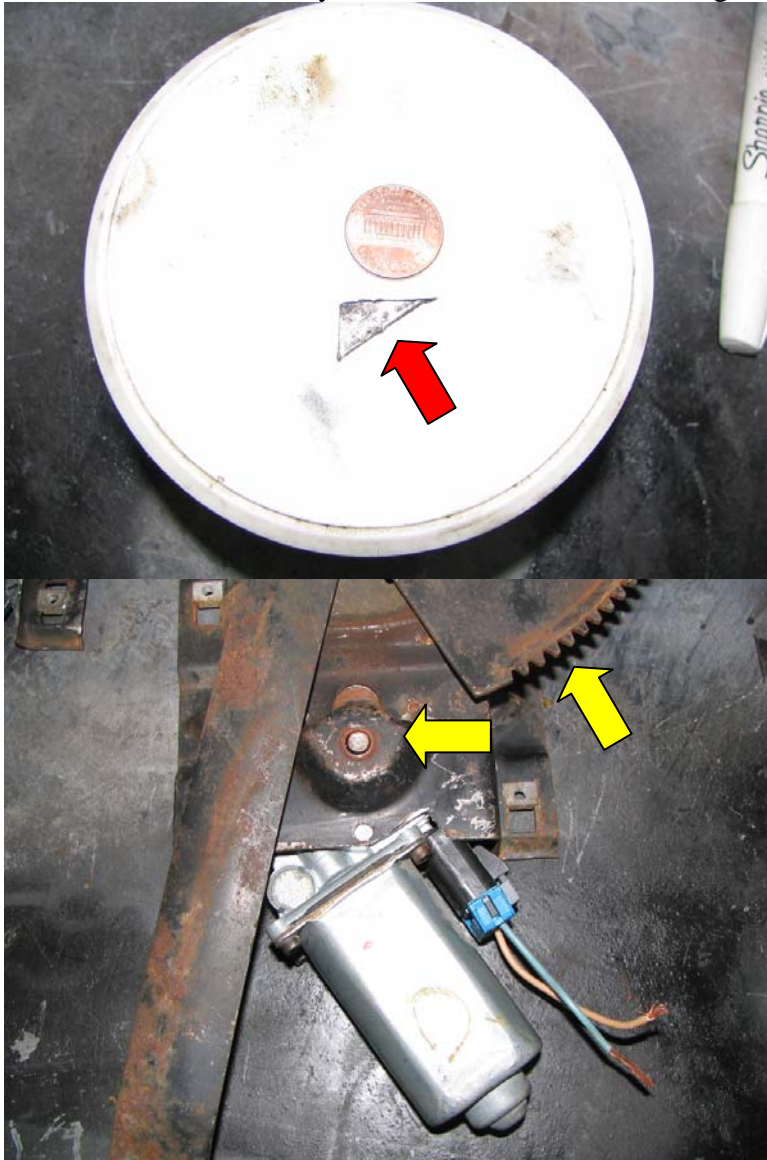
Window regulator after you removed the window crank.



4. Next you will need to cut out a very small part of the regulator. This way the motor will sit flush. See the white lines?



6a This area is very small and can be cut out using a cutoff wheel or other methods.



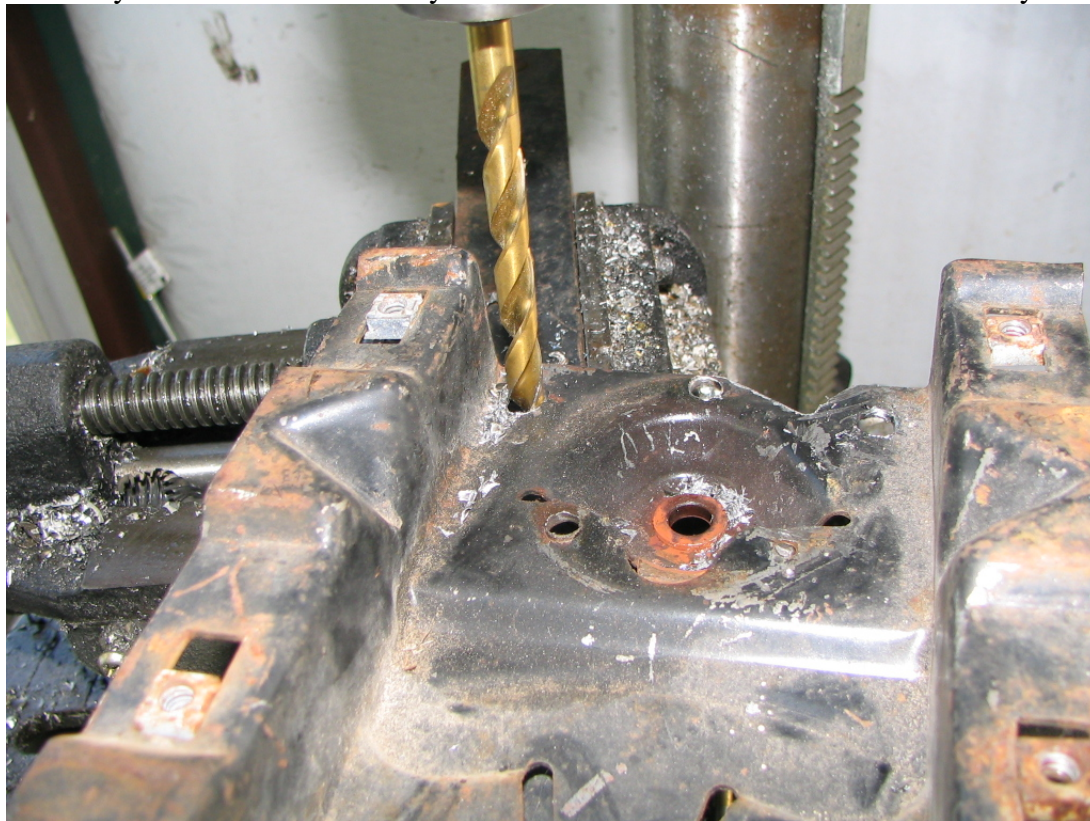
Notice the Yellow arrows? It is easier to fit the motor with the window regulator at full extension.

8. The next step is to drill holes for the mounting bolts. Mark the location of the bolt holes. Be sure to have the motor flush against regulator and clocked correctly. I did not install the top bolt because of the clearance on the back of regulator.



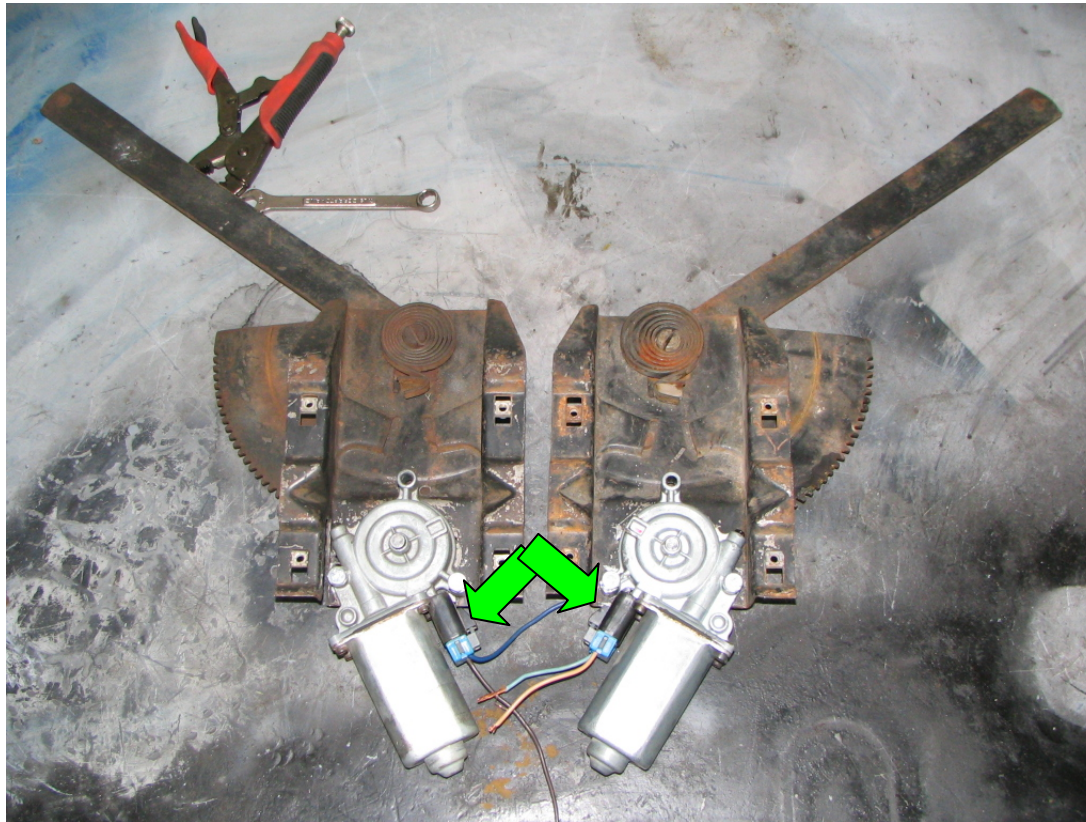
Notice the Yellow arrow? When motor is fully installed you will need the motor teeth matched up to regulator teeth.

9. After you mark the holes then you need to drill them. I used a 5/16 bit for my holes just in case I wasn't 100% on the center.



10. Now that the holes are drilled you will need to install the bolts and motors. Remember to have the teeth in a position so the motor and teeth align up. Next put the bolts in then the motor. Add the lock washers and nuts. Now you are ready to go.

Note: Notice the window arm in relation to the motor direction. Also you will need to make sure the Black power plug is facing the correct way, if not then you will have a clearance problem with the window tracks. This happens when you try to use 2 driver side or 2 passenger side motors.



The way the motor works is power and ground are switched to go up or down. If everything was done right then you will be ready to install the regulators back in the truck.